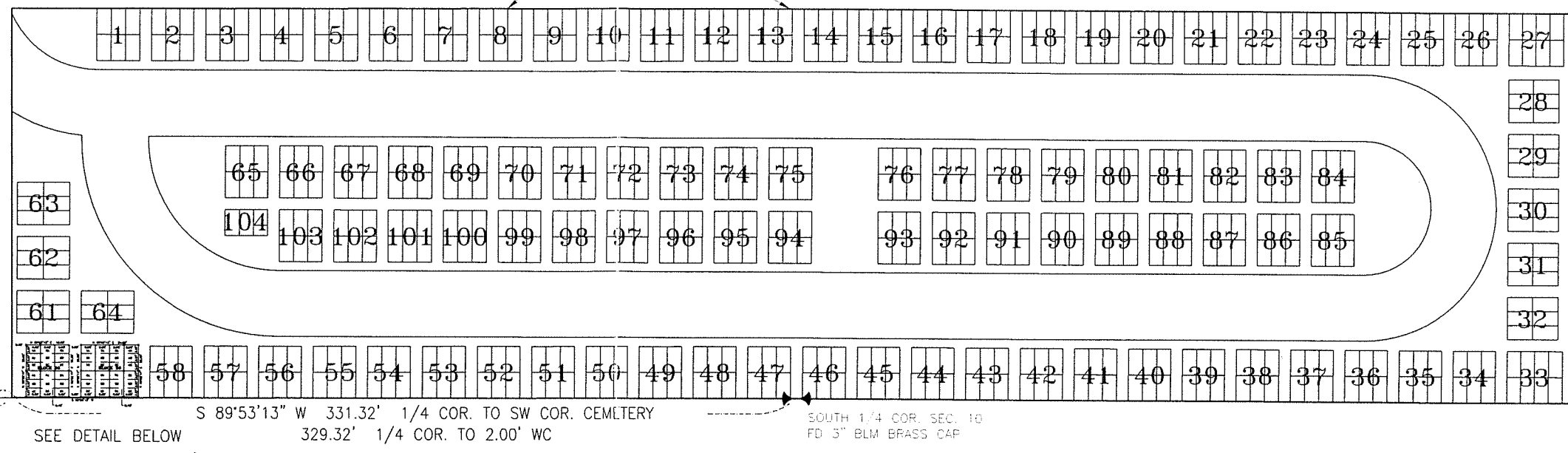
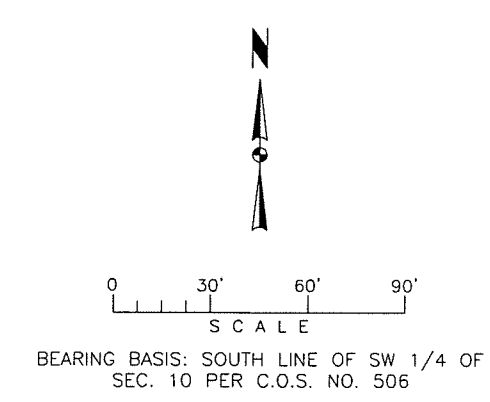


C.O.S. NO. 506



FD 2" ACAP [4955 S]

S 89°53'13" W 183.73'

SEE DETAIL BELOW

S 89°53'13" W 331.32' 1/4 COR. TO SW COR. CEMLTARY
329.32' 1/4 COR. TO 2.00' WC

SOUTH 1/4 COR. SEC. 10
FD 3" BLM BRASS CAP

CERTIFICATE OF SURVEYOR

I, the undersigned, Steven C. Anderson, Professional Land Surveyor, do hereby certify that on October 5, 2005, I surveyed Blocks 59 and 60 as shown on the accompanying plat which is a true and accurate representation of said survey.

Dated this 18 day of October, 2005

Steve Anderson
Steven C. Anderson
Montana License No. 12251 LS

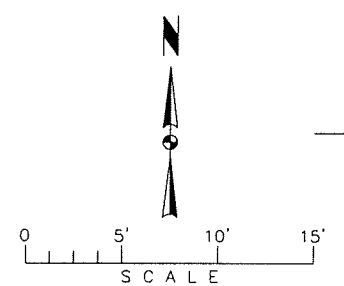
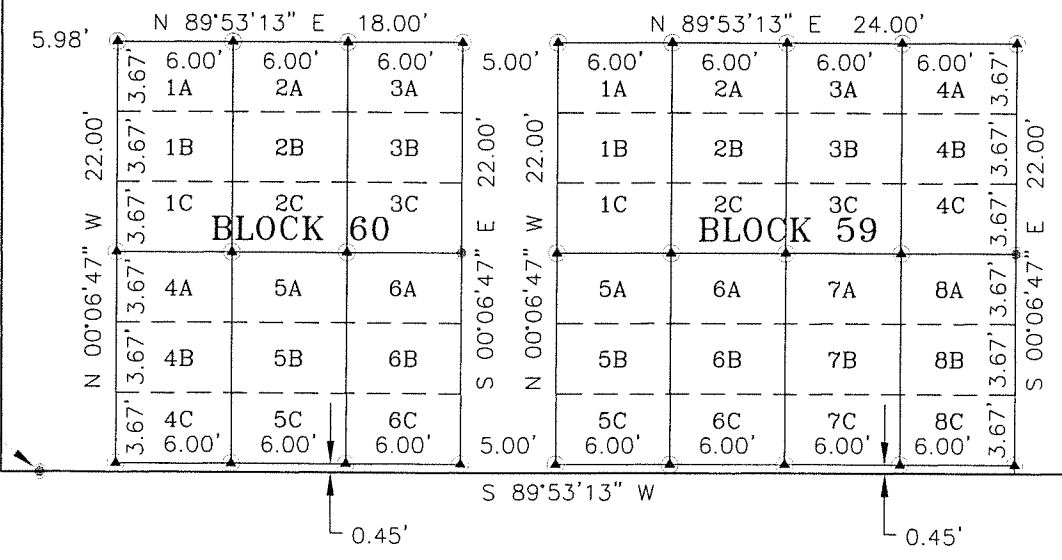
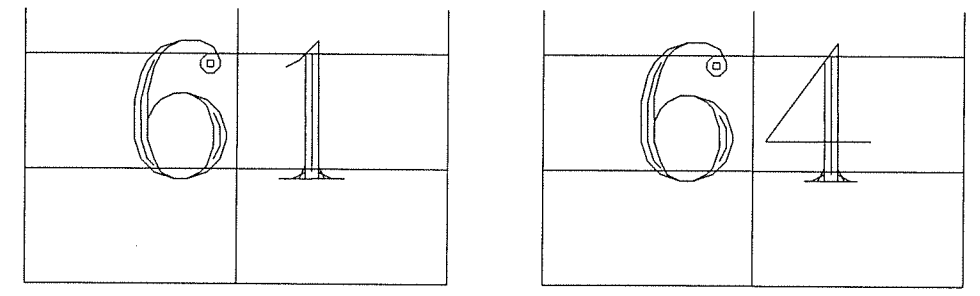


LEGEND

SYMBOL	DESCRIPTION
●	FD ALUMINUM CAP, EXCEPT AS NOTED
⊙	SET 5/8" RB AND ACAP [12251 S]
ACAP	ALUMINUM CAP
RB	REBAR
WC	WITNESS CORNER
FD	FOUND
[12251 S]	SURVEYOR LICENSE NUMBER

LOTS IN BLOCKS 59 & 60
ARE 6.00' LONG & 3.67'
(3' 8") WIDE.

FD 2.00" WC 2" ACAP [12251 S]



BEARING BASIS: SOUTH LINE OF SW 1/4 OF SEC. 10
PER C.O.S. NO. 506

REVISIONS

DATE	DESCR

THOMAS, DEAN & HOSKINS, INC.
ENGINEERING CONSULTANTS
GREAT FALLS - BOZEMAN - KALISPELL - HELENA
SPokane - LEWISTON
MONTANA
WASHINGTON
IDAHO

DRAWN BY: 58
DESIGNED BY:
QUALITY CHECK:
DATE: 10/18/05
JOB NO. B05-044
FIELDBOOK 133/21

FIR RIDGE CEMETERY
NORTH OF WEST YELLOWSTONE, MONTANA
AMENDMENT OF BLOCKS 59 & 60, C.O.S. NO. 506
LOCATED IN SEC. 10, T12S, R5E, P.M.M., GALLATIN COUNTY